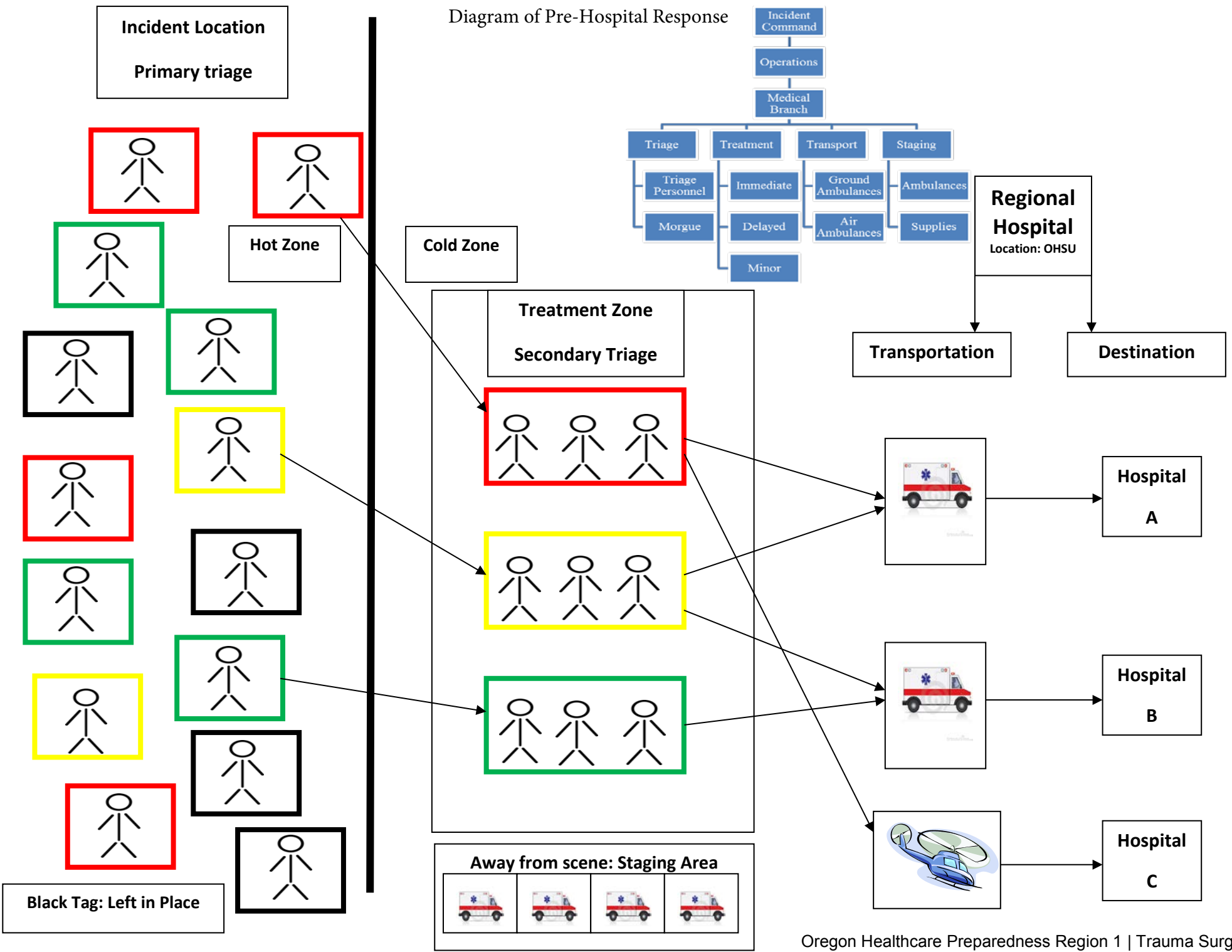
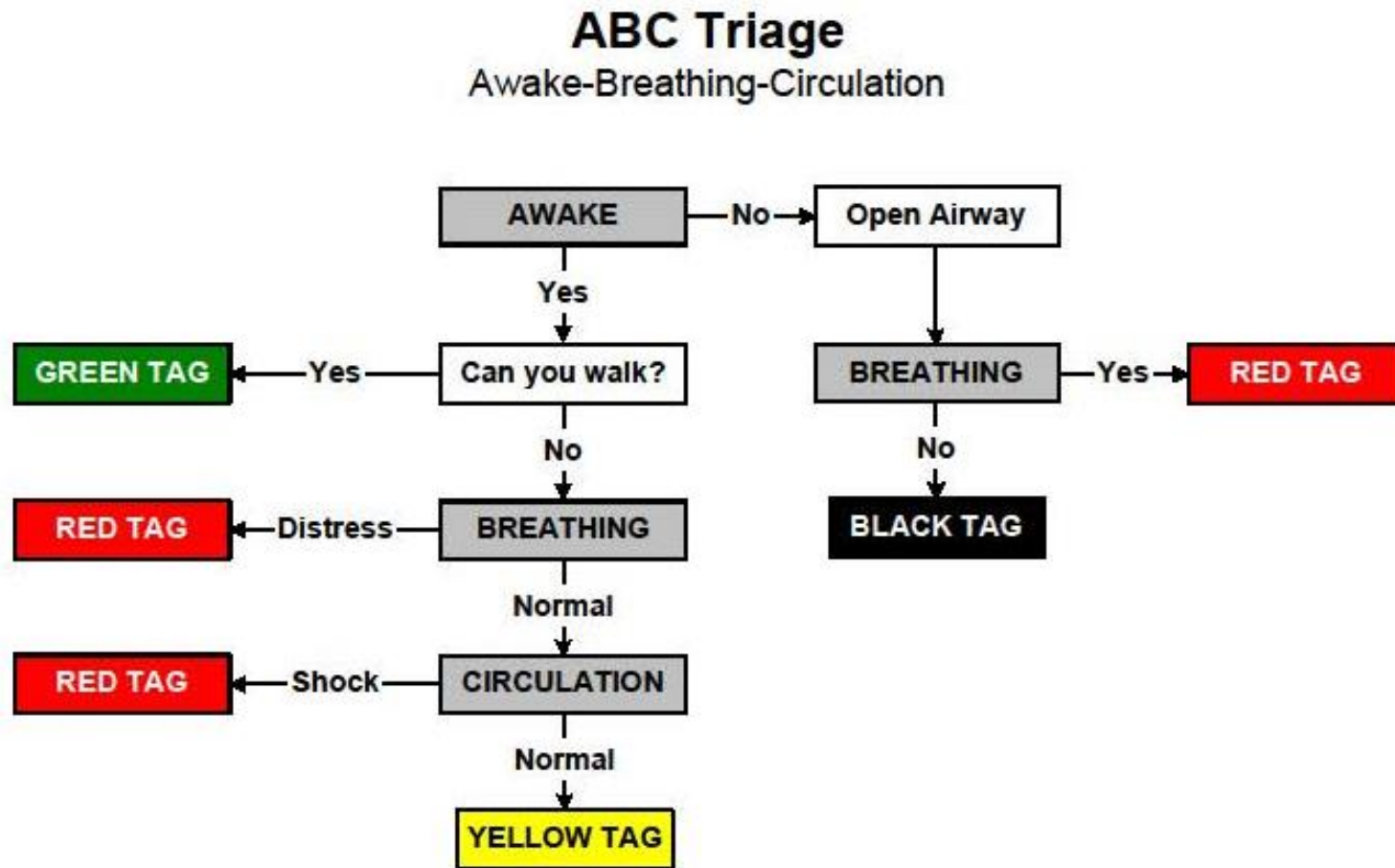


Diagram of Pre-Hospital Response



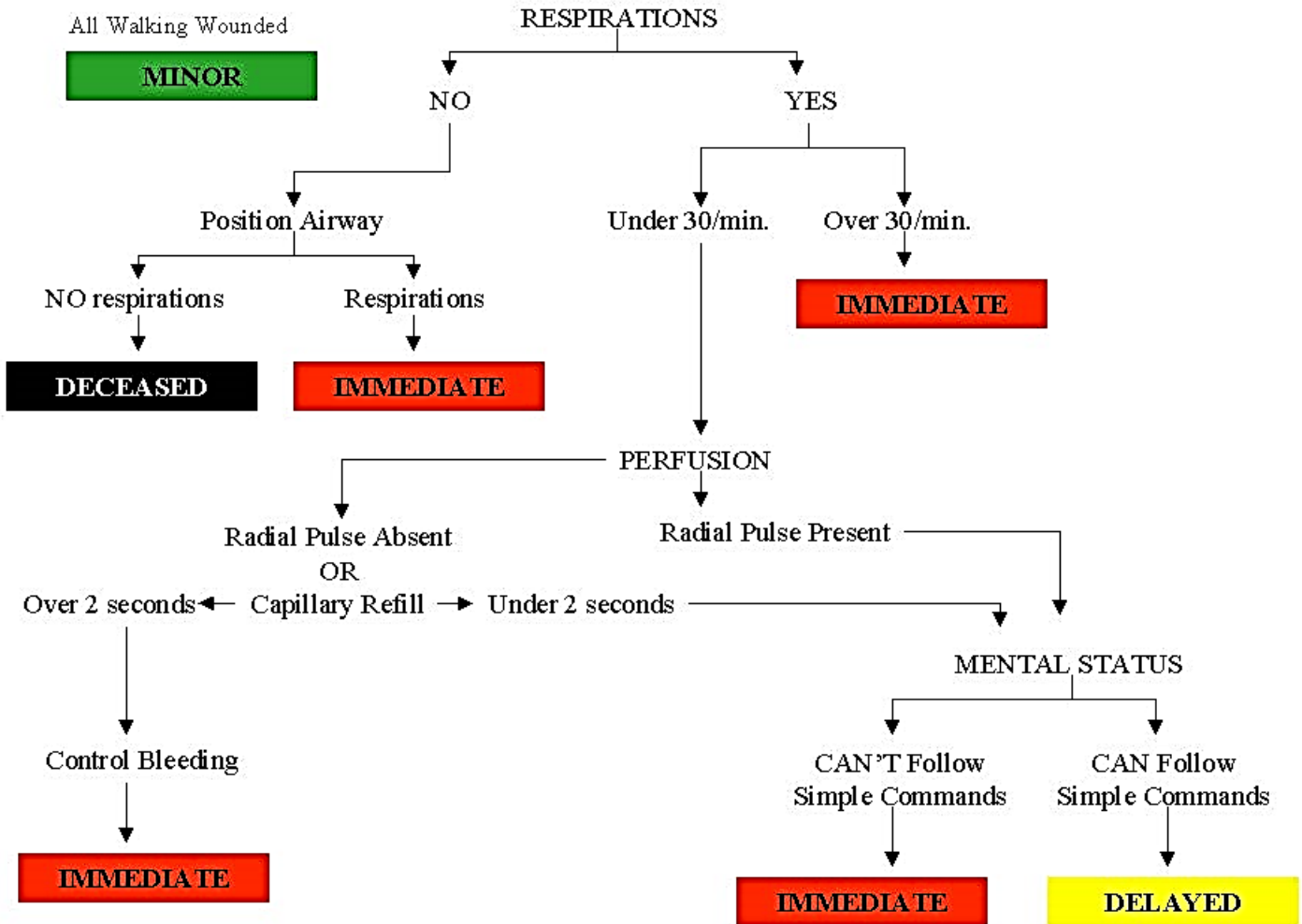
Pre-hospital responders use a variety of triage algorithms; but all result in the same conclusions. Awake-Breathing-Circulation (ABC) and Simple Triage and Rapid Treatment (START) are the most prevalent and allow for rapid assessment and classification of patients in one of four color categories.

Awake-Breathing-Circulation (ABC)



Simple Triage and Rapid Treatment (START)

S.T.A.R.T. Triage Algorithm

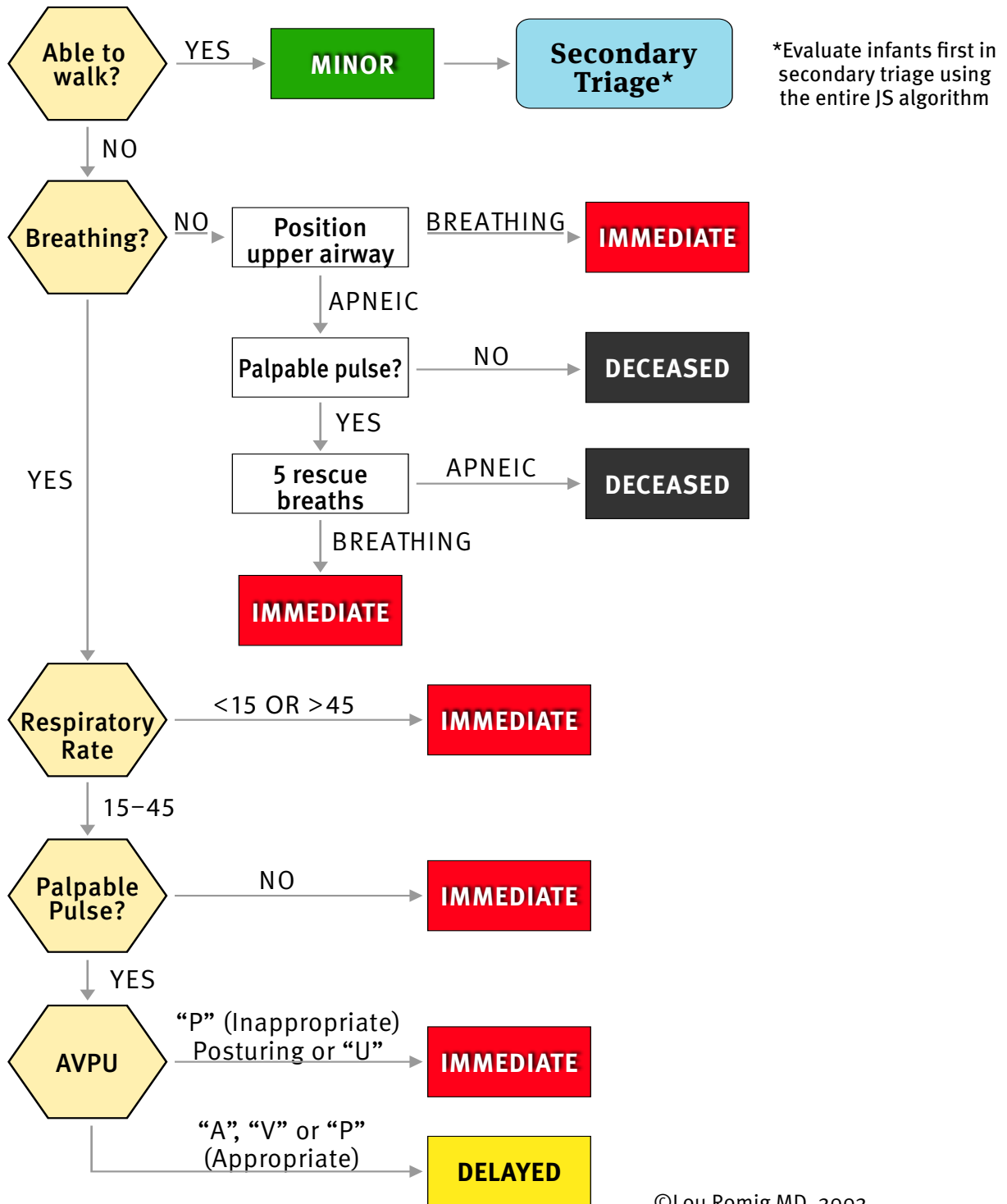


Red	Urgent	Patients with a life threatening injury who have a high probability of survival if given immediate care and rapid transport.
Yellow	Delayed	Patients with injuries that have life threatening implications but who are not yet showing signs of shock or hypoxia and treatment can be delayed.
Green	Minor	Ambulatory (walking wounded) patients with localized injuries that require minimal treatment and do not have systemic implications.
Black	Deceased or Expectant	The deceased or patients that are not expected to survive due to the severity of injuries complicated by the conditions and lack of resources.

Once patient classification is decided, a colored ribbon (red, yellow, green, or black) is applied to each victim. This ribbon allows other responders to immediately turn their attention to the victims most in need.

Pediatric victim triage will be done using a slight variation of the adult triage; this is known as JumpSTART. This format helps reduce the emotional burden on triage personnel who may have to make rapid life-or-death decisions about injured children in a chaotic circumstance.

JumpSTART Pediatric MCI Triage[©]



©Lou Romig MD, 2002